

**HENRY 2DW1 ST1 FORMATION EVALUATION LOG**

 		MD meters 1:500	LITHOLOGY %	INTERPRETED LITHOLOGY	RESISTIVITY	CHROMATOGRAPH	CUT FLUORESCENCE	CALC	REMARKS
					Resistivity (shallow)	Total Gas			
					2   20   200 ohm.m	1   10   100   1000 unit	DIRECT FLUORESCENCE		
					2   20   200 ohm.m	Methane	PGF		
						Ethane	PGF		
						Propane			
						i-Butane			
						n-Butane			
						i-Pentane			
						n-Pentane			
						100   1000   10000   100000 ppm			
<p>SPP: 2505-4153psi</p> <p>8/10/2008</p> <p>NB: 11 SMITH MD#16 (LBPX) PDC Bit 216mm (8-1/2") 6x14 jets In: 2056.00m Out: xxxx.xxm Drilled: xxxx.xxm in xx.xhrs X-X-X-X-X-X-X-X-X-X</p> <p>WOB: 5-25kbs RPM: 59-172 GPM: 498-665 SPP: NO DATA</p>		2030							sft-disp, sbiky-blky
		2040				CO2: 25ppm 97/2/1/T/r/T/r			MW: 1.38 FV: 68 PV: 32 YP: 44 GELS: 10/22/29 SOL: 12.65 pH: 8.7 Ck: 0.5 CL: 58000
		2050				CO2: 623ppm 97/2/1/T/r/T/r			Set 244mm (9-5/8") Casing at 2042.7m
		2060				CO2: 22ppm 97/2/1/T/r/T/r			SANDSTONE: off wh, v f-f, wl srt, sbang-sbrnrd, mod calc cmt, com off wh arg mtr, mnr liths & carb spks, lse, fri-mod hd, pr vis por, no fluor
		2070							Henry 2DW1 ST1 reached 311mm (12-1/4") hole section TD @ 2050.00m at 00:30hrs on 08/10/08
		2080							SILTSTONE: m-occ dk brn, brn gy i/p, mnr arg, occ carb spks, frm-mod hd, blkly-sblky
		2090							Survey at 2060.87m Inc: 81.14° Azi: 119.93° TVD: 1712.9m
		2100				97/2/1/T/r/T/r CO2: 44ppm			SANDSTONE: clr-trsl, off wh, v f-f, wl srt, sbang-sbrnrd, mod sil cmt, com off wh arg mtr, com liths & carb spks, com lse, fri, pr vis por, fr inf por, no fluor
		2110							Survey at 2089.40m Inc: 83.69° Azi: 121.06° TVD: 1716.7m
		2120							SANDSTONE: off wh, clr-trnsl, v f-occ f, wl srt, sbang-sbrnrd, mod sil cmt, com-abd off wh arg mtr, tr liths, mnr carb spks, com lse, fri, pr vis por,

pr-occ fr inf por, no fluor

Survey at 2119.14m  
Inc: 85.41°  
Azi: 120.66° TVD: 1719.5m

**SANDSTONE:** off wh, clr-trnsl, v f-occ f, wl srt, sbang-dom sbrndd, mod sil cmt, com-abd off wh arg mtrx, occ liths, mnr carb spks & rr frags, lse, fri, mnr mod hd, pr vis por, pr-occ fr inf por, no fluor

**SILTSTONE:** pl gy, occ med gy, arg, occ carb spks, v sft-frm, disp i/p, sblky, amor

Survey at 2147.97m  
Inc: 86.71°  
Azi: 118.39° TVD: 1721.5m

**SANDSTONE:** off wh, clr-trnsl, v f, f i/p, wl srt, sbang-sbrndd, wk-mod sil cmt, com-abd off wh arg mtrx, occ-com liths, mnr carb spks & lams, lse, fri, mnr mod hd, pr vis & inf por, no fluor

Survey at 2176.21m  
Inc: 88.20°  
Azi: 119.11° TVD: 1722.8m

**SANDSTONE:** clr-trnsl, off wh, v f-f, wl srt, sbang-dom sbrndd, wk-mod sil cmt, com-abd off wh arg mtrx, occ-com liths, mnr carb spks & lams, rr glauc grs, fri, mnr mod hd, pr vis & inf por, no fluor

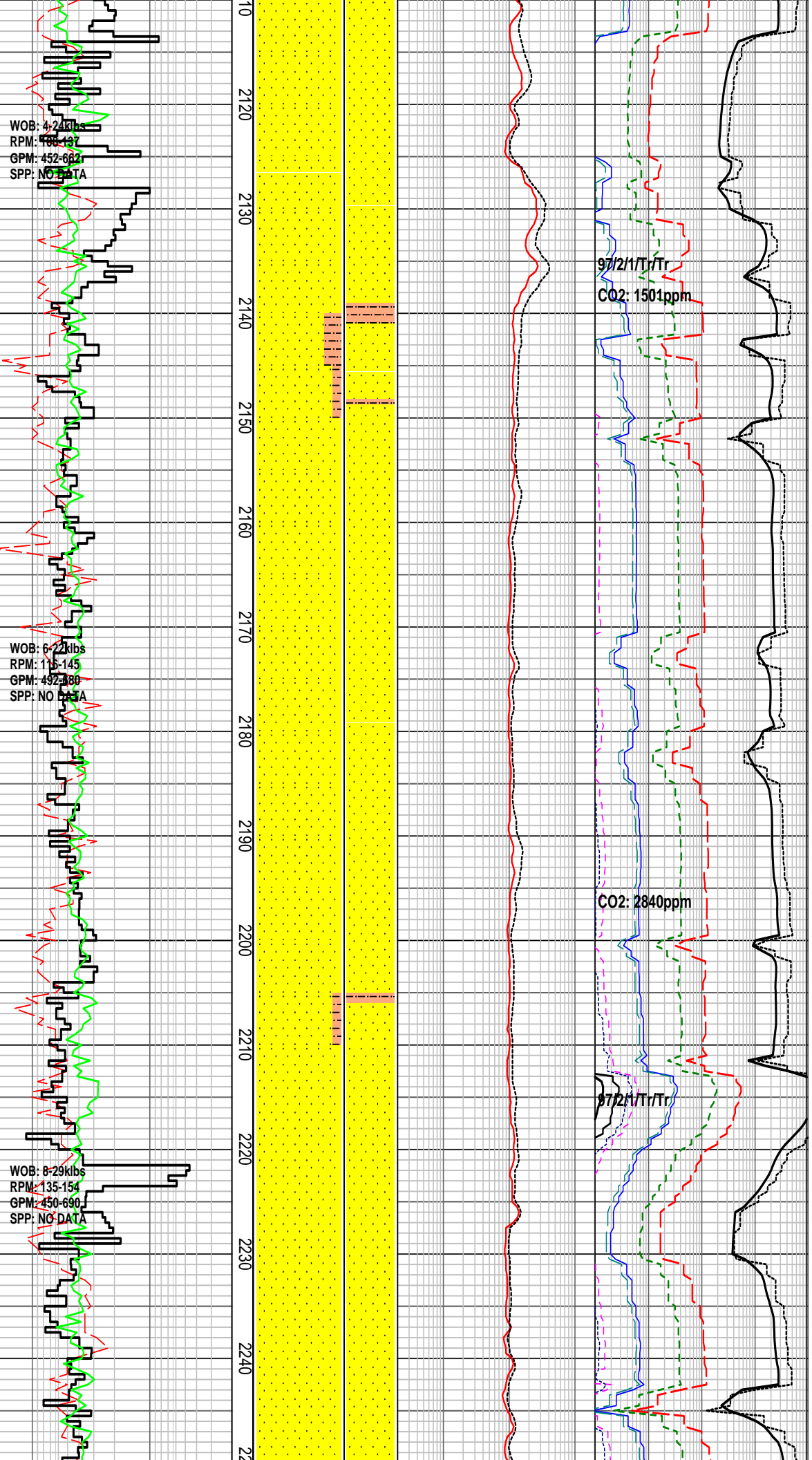
Survey at 2203.29m  
Inc: 87.18°  
Azi: 118.39° TVD: 1723.8m

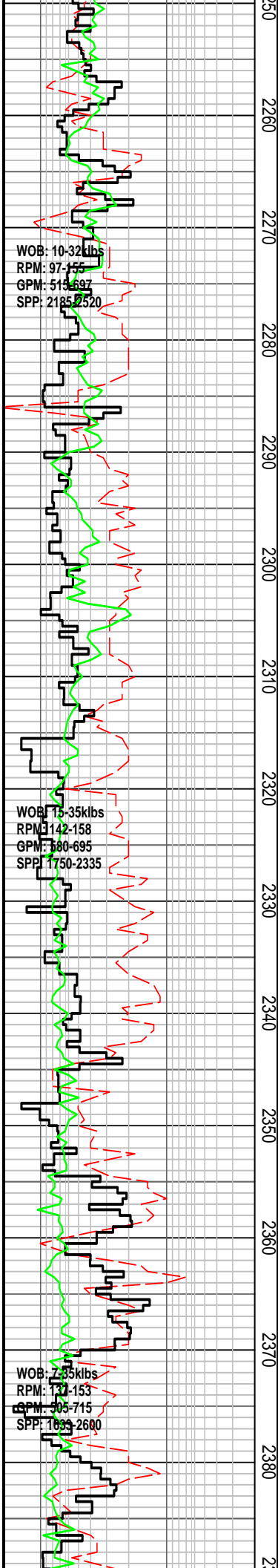
**SILTSTONE:** pl gy brn, arg, mnr carb spks, disp, v sft, amor, sblky

**SANDSTONE:** trnsl, clr, lt gy, v f-f gr, sbang-sbrndd, mod wl srt, mod sil cmt, com lt gy arg / slty mtrx, rr lith, tr biot, rr spks, fri, com dis-agg grs, pr-fr inf por, no fluor

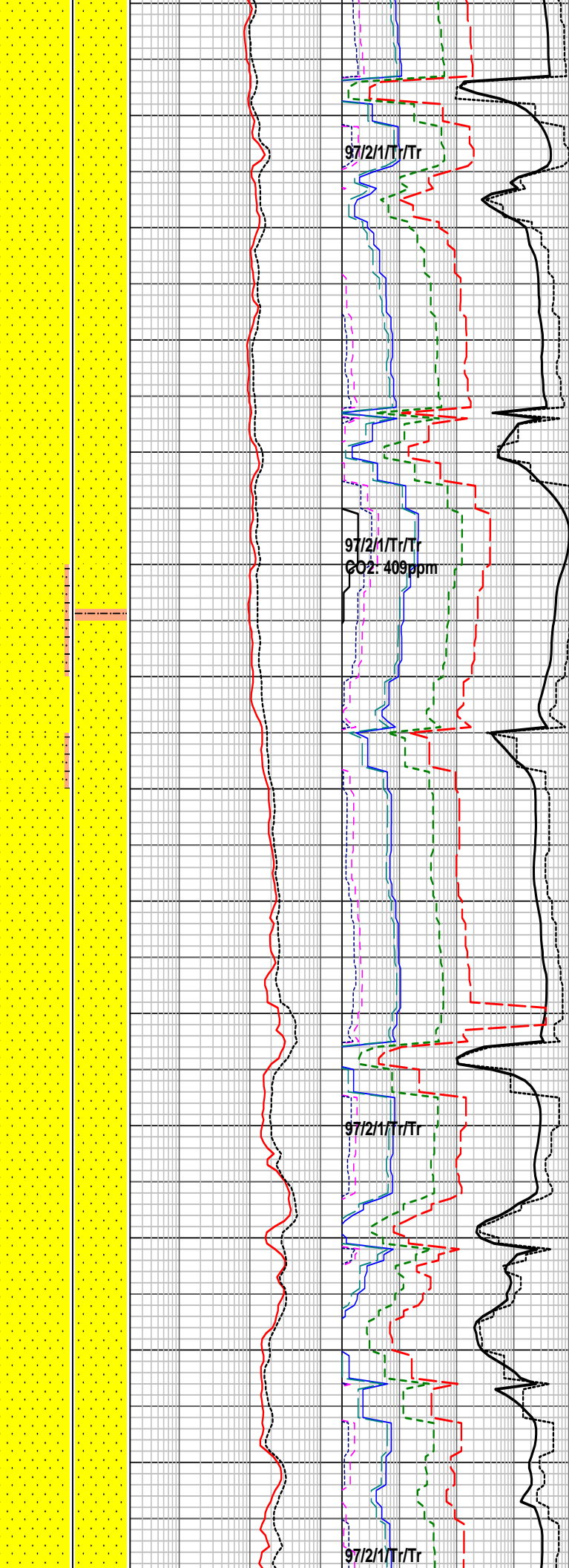
**SANDSTONE:** trnsl, clr, lt gy, v f-f gr, sbang-sbrndd, mod wl srt, mod sil cmt, com lt gy arg / slty mtrx, rr lith, tr biot, rr spks, fri, com dis-agg grs, pr-fr inf por, no fluor

**SANDSTONE:** trnsl, clr, lt gy, f-m gr, sbang-pred sbrndd,





2250  
2260  
2270  
2280  
2290  
2300  
2310  
2320  
2330  
2340  
2350  
2360  
2370  
2380



mod wl srt, wk arg cmt, mnr lt  
gy arg mtrx, rr lith, tr biot, abd  
carb spks/flks & mnr frags  
tr nod pyr, fri agg, pred lse, fr  
inf por, tr min fluor

Survey at 2262.00m  
Inc: 84.35°  
Azi: 118.36° TVD: 1728.0m

**SANDSTONE:** trnsl, clr, lt gy,  
f-m gr, sbang-pred sbrndd,  
mod wl srt, wk arg cmt, mnr lt  
gy arg mtrx, rr lith, tr biot, abd  
carb spks/flks & mnr frags  
tr nod pyr, fri agg, pred lse, fr  
inf por, tr min fluor

Survey at 2291.17m  
Inc: 84.96°  
Azi: 118.67° TVD: 1730.7m

**SILTSTONE:** m gy, m brnsh  
gy, arg, com f carb spks, tr  
lith, tr micmic, sft frm, blk

**SANDSTONE:** trnsl, clr, lt gy,  
f-m gr, sbang-pred sbrndd,  
mod wl srt, wk arg cmt, mnr lt  
gy arg mtrx, rr lith, tr biot, abd  
carb spks/flks & mnr frags  
tr nod pyr, fri agg, pred lse, fr  
inf por, tr min fluor

**SANDSTONE:** clr, trnsl, f-crs  
pred m grn, sbang-sbrndd, pr  
srt, tr sil cmt, rr carb frags, tr  
nod pyr, pred lse, fr-gd inf por,  
tr min fluor

**SANDSTONE:** clr, trnsl, f-crs  
pred m grn, sbang-sbrndd, pr  
srt, tr sil cmt, rr carb frags, tr  
nod pyr, pred lse, fr-gd inf por,  
tr min fluor

Survey at 2378.05m  
Inc: 87.74°  
Azi: 120.27° TVD: 1737.2m

**SANDSTONE:** trnsl, clr, wh,  
f-m grn, tr crs, mod wl srt,

sbang-pred sbrndd, rr cal cmt,  
mnr carb frags, tr nod pyr, lse,  
fri agg, fr inf por, tr min fluor

Survey at 2407.02m  
Inc: 88.03°  
Azi: 122.04° TVD: 1738.2m

SANDSTONE: clr, trnsl, wh i/p,  
f-m grn, sbang-pred sbrndd,  
mnr wk calc cmt, tr lith, mnr  
carb frags, fri-lse, fr-gd inf por,  
tr min fluor

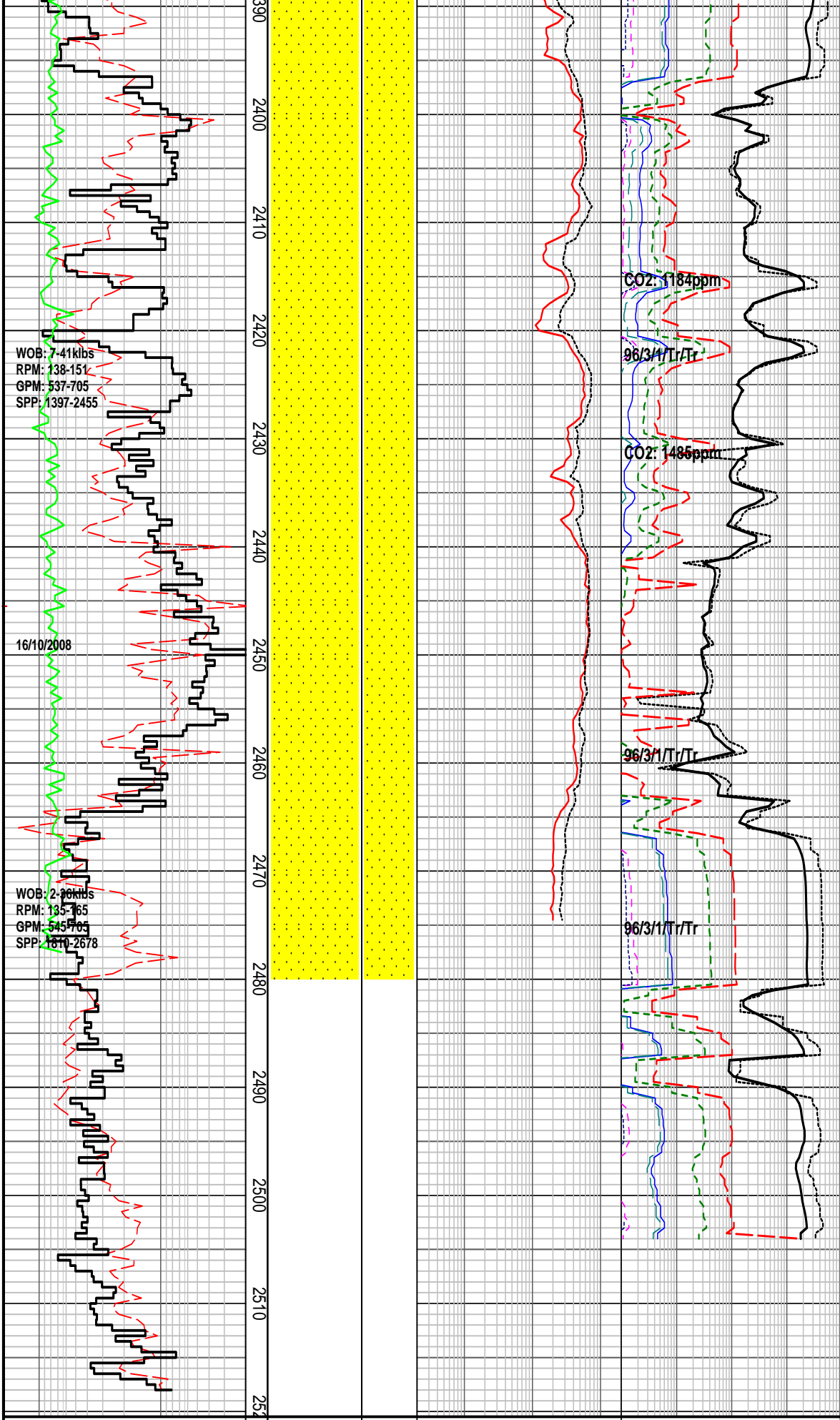
Survey at 2434.71m  
Inc: 89.37°  
Azi: 121.59° TVD: 1738.9m

SANDSTONE: clr, trnsl, wh i/p,  
f-med gr, sbang-pred sbrndd,  
mnr wk calc cmt, tr liths, tr  
nod pyr, mnr carb frags,  
fri-lse, fr-gd inf por, tr min  
fluor

MW: 1.20 FV: 40 PV: 11 YP: 28  
GELS: 10/12/13 SOL: 8.50  
pH: 8.5 Ck: 0.5 CL: 65000

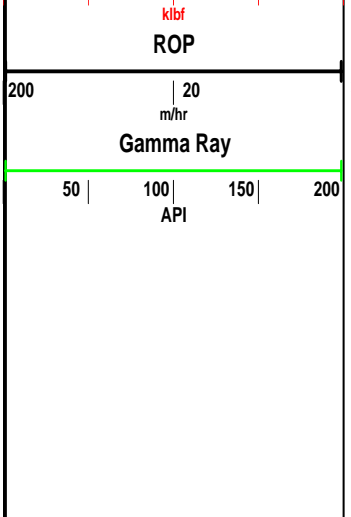
Survey at 2464.48m  
Inc: 93.04°  
Azi: 122.14° TVD: 1738.7m

SANDSTONE: clr-trnsl, off wh  
i/p, f-m, wl srt, sbang-dom  
sbrndd, mod calc cmt, rr-mnr  
off wh arg mtrx, mnr carb  
spks, gen lse grs, mnr fri, fr  
vis & inf por, tr min fluor



### HENRY 2DW1 ST1 FORMATION EVALUATION LOG

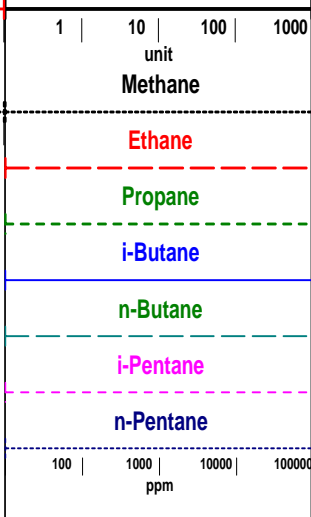
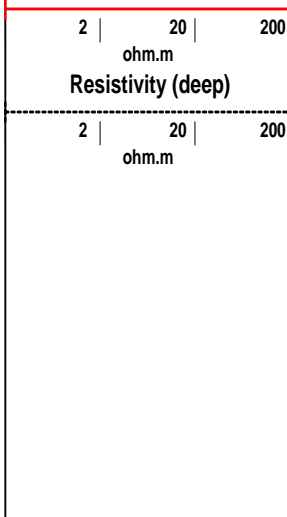
WOB	RESISTIVITY	CHROMATOGRAPH	CALC	REMARKS
10   20   30   40	Resistivity (shallow)	Total Gas	D	



meters 1:500

LITHOLOGY %

INTERPRETED LITHOLOGY



INDIRECT FLUORESCENCE  
PFG

FLUORESCENCE